

Sailing Instructions

The organising authority is Sidmouth Sailing Club.

All times in BST (UTC+1)

The Racing Rules of Sailing states: *the notation '[DP]' in a rule means that the penalty for a breach of the rule may, at the discretion of the protest committee, be less than disqualification. Guidelines for discretionary penalties are available on the World Sailing website.*

The notation '[NP]' in a rule of the sailing instructions (SIs) means that a boat may not protest another boat for breaking that rule. This changes RRS 60.1(a).

1 Rules

The event will be governed by the rules as defined in the Racing Rules of Sailing (RRS).

2 Changes to sailing instructions

Any change to the Sailing Instructions will be posted at least 60 minutes before the advertised start time, or actual start time, whichever is the later, except that any change to the schedule of races will be posted by 19.00 on the day before it will effect.

3 Communications with competitors

3.1 Notices to competitors will be posted on the online official notice board.

3.2 The race committee may additionally notify competitors that a notice has been posted using the competitors' WhatsApp group.

3.3 [DP] From the first warning signal until the end of the last race of the day, except in an emergency, a boat shall not make voice or data transmissions and shall not receive voice or data communication that is not available to all boats.

4 Code of conduct

[NP][DP] Competitors and support persons shall comply with reasonable requests from race officials.

5 Signals made ashore

5.1 Signals made ashore will be displayed from the flagstaff of the Sailing Club.

5.2 When the AP is displayed ashore, '1 minute' is replaced with 'not less than 30 minutes' in race signal AP.

5.3 [NP][DP] Flag D displayed with one sound means 'boats are permitted to leave the shore'. A boat shall not leave the shore until this signal is made. The warning signal for the first race will not be made less than 30 minutes after this signal is made.

6 Schedule of races

6.1 The schedule of races is:

Race	Time of warning signal
Race 1	Saturday 21 st May, 11.55
Race 2	As soon as practicable after the finish of race 1
Race 3	As soon as practicable after the finish of race 2
Race 4	Sunday 22 nd May, 10.25
Race 5	As soon as practicable after the finish of race 4
Race 6	As soon as practicable after the finish of race 5

6.2 One extra race per day may be sailed, provided that the fleet becomes no more than one race ahead of schedule and the change is made according to SI 2.

6.3 To alert boats that a race or sequence of races will begin soon, the orange starting line flag will be displayed with one sound at least five minutes before a warning signal is made.

6.4 On the last scheduled day of racing, no warning signal will be made after 15.00.

7 Class Flag

The Scorpion Class flag will be a yellow flag with a red horizontal band.

8 Racing Area

The racing area will be within a radius of approximately 3 miles from Sidmouth Sailing Club.

9 The Course

9.1 The diagrams and descriptions in SI Appendix A show the course, the order in which marks are to be passed or rounded, and the side on which each mark is to be left.

9.2 No later than the warning signal, the race committee signal vessel will display:

- (a) the course signal as shown in SI A2.1; and
- (b) the approximate compass bearing of the first leg.

10 Marks

10.1 Marks 1, 2, & 3 will be orange inflatable buoys.

10.2 The new mark allowed for in SI 12.1 will be a black inflatable buoy.

10.3 The starting and finishing marks will be yellow inflatable pillar buoys.

11 The Start

11.1 The starting line is between a staff displaying an orange flag on the race committee signal vessel at the starboard end and the port end starting mark. An official vessel may be positioned in the vicinity of the port end starting mark, but shall not be a part of the starting line.

11.2 A boat that does not start within 4 minutes after her starting signal will be scored Did Not Start (DNS) without a hearing. This changes RRS A5.1 and A5.2.

12 Change of the Next Leg of the Course

12.1 To change the next leg of the course, the race committee will lay a new mark (or move the finishing line) and remove the original mark as soon as practicable. When in a subsequent change a new mark is replaced, it will be replaced by an original mark.

13 The Finish

13.1 The finishing line is between a staff displaying a blue flag on a race committee vessel at the starboard end and the course side of the port end finishing mark.

13.2 Places awarded on the course

- (a) A boat may be awarded a finishing position on the course. The race committee will hail the boat's sail number and inform her that she has been given a finishing position. This changes RRS 35.
- (b) A boat finished under this rule will be given a finishing place after all boats which have finished or are ahead of her on the course at the time.
- (c) [DP] A boat awarded a finishing position using SI 14.1 shall immediately return to the starting area.
- (d) The use of this rule by the race committee shall not be grounds for redress. This changes RRS 62.1(a).

14 Time Limits and Target Times

14.1 The target time, mark 1 time limit and race time limit (see RRS 35) are:

Target time	45 minutes
Mark 1 time limit	30 minutes
Race time limit	90 minutes

14.2 Failure to meet the Target Time will not be grounds for redress. This changes RRS 62.1(a).

14.3 If no boat has passed the first mark within the mark 1 time limit, the race will be abandoned.

15 Hearing Requests

15.1 The Post-Race Penalty, Advisory Meeting and RYA Arbitration of the RYA Rules Disputes Procedures are available. For details see SI Appendix B.

15.2 The protest time limit is 90 minutes after the last boat has finished the last race of the day or the race committee signals 'no more racing today', whichever is later. The time will be posted on the online official notice board.

15.3 Hearing request forms are available at the Sailing Club.

15.4 Notices will be posted no later than 30 minutes after the protest time limit to inform competitors of hearings in which they are parties or named as witnesses. Hearings will be held at the Sailing Club, beginning at the time posted.

16 Scoring

16.1 One race is required to be completed to constitute a series.

16.2 Series scores:

- (a) When fewer than 3 races have been completed, a boat's series score is the total of her race scores.
- (b) When 3 or more races have been completed, a boat's series score is the total of her race scores excluding her worst score.

17 Safety Regulations

17.1 RRS 40.1 (personal flotation devices) applies at all times whilst afloat and is [NP][DP].

17.2 **[NP][DP] Check-out and check-in procedure:**

- (a) The tally control point will be located at the Sailing Club.
- (b) A tally will be a numbered rubber wrist-band. Numbers will be allocated at registration and posted on the official notice board.
- (c) Each competitor shall check out before leaving the shore by collecting his/her tally from the tally control point.
- (d) Each competitor shall wear his/her tally visibly, over clothing, on the right wrist at all times while afloat.
- (e) Each competitor shall check in immediately on returning to shore, by returning the tallies to the tally control point.

17.3 [NP][DP] A boat that retires from a race shall notify the race committee at the first reasonable opportunity.

18 Risk Statement

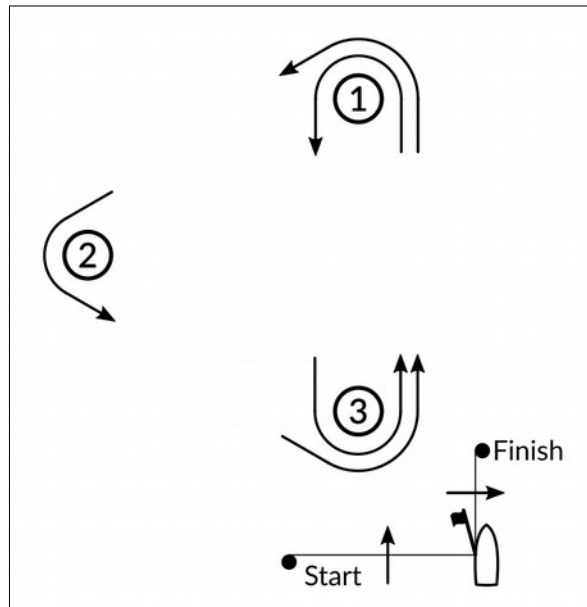
See NoR 9.

19 Insurance

See NoR 10.

Appendix A. Courses

A.1 Course diagram



A.2 Course description

2.1. The order of marks is as follows:

Signal	Description
S ₂	Start-I-3-I-2-3-Finish
S ₃	Start-I-3-I-2-3-I-3-Finish
S ₃	Start-I-3-I-2-3-I-3-I-2-3-Finish
T ₂	Start-I-2-3-I-3-Finish
T ₃	Start-I-2-3-I-3-I-2-3-Finish
T ₄	Start-I-2-3-I-3-I-2-3-I-2-Finish

2.2. Marks 1, 2 and 3 are to be rounded to port.

Appendix B. Rules Disputes Procedures

B.1 Post-Race Penalty

- 1.1. A boat that may have broken a rule of Part 2 of the Racing Rules of Sailing or rule 31 may, after finishing the race concerned and before the protest time limit or, if a hearing has been scheduled, before the start of that hearing, notify the race committee that it accepts a Post-Race Penalty – a 30% scoring penalty (SCP), based on the number of boats that came to the starting area in that race, except that the minimum penalty is three places and the boat shall not be scored worse than the number of boats that came to the starting area. However, if the boat caused injury or serious damage or, despite taking a penalty, gained a significant advantage in the race or series by its breach, its penalty shall be to retire.
- 1.2. When a Post-Race Penalty is accepted:
 - (a) neither the boat nor a protest committee may then revoke or remove the penalty;
 - (b) the boat shall not be penalised further in a protest hearing when the protest committee decides that it was appropriate to the facts found and the applicable rules.

B.2 Advisory Meeting

- 2.1. When there is an incident that will not result in the lodging of a protest or a request for redress, a boat may request an advisory meeting and notify any boat involved in the incident.
- 2.2. An adviser will then call a meeting to learn what may have happened and will state whether any rule appears to have been broken, and by which boat.
- 2.3. A boat may as a result notify the race office that it accepts a Post-Race Penalty when it applies to the incident, or choose to retire, but is not required to do so.

B.3 RYA Arbitration

- 3.1. After a protest is lodged, a boat may request RYA Arbitration, or the protest committee or race committee may offer it.
- 3.2. If the parties and the protest committee agree that RYA Arbitration is suitable, an arbitrator (who may be a member of the protest committee) will call an arbitration. When it is the arbitrator's opinion that a boat that is a party to the arbitration has broken a rule for which the Post-Race Penalty is available, the party will be invited to accept that penalty and, if all such penalties are accepted, the protesting boat will be allowed to withdraw the protest, changing rule 63.1.
- 3.3. When any of the following conditions apply:
 - (a) a party to the protest does not agree to RYA Arbitration,
 - (b) the arbitrator's opinion is that the Post-Race Penalty is not applicable to the incident
 - (c) a boat may be entitled to redress
 - (d) a boat does not accept an offered Post-Race penalty,
 - (e) the protest is not withdrawn,
- 3.4. there will be a protest committee hearing. The arbitrator may be a member of the protest committee.
- 3.5. Any boat is entitled to accept a Post-Race Penalty at any time before the later of the protest time limit or the start of the protest committee hearing and receive protection from further penalisation. The boat may also retire.
- 3.6. Rules 66 and 70 (reopening and appeal, respectively) do not apply to an RYA Arbitration since this is not a protest committee decision.